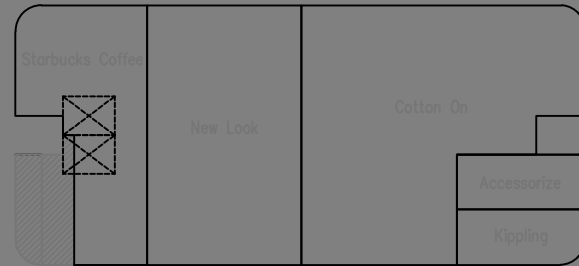




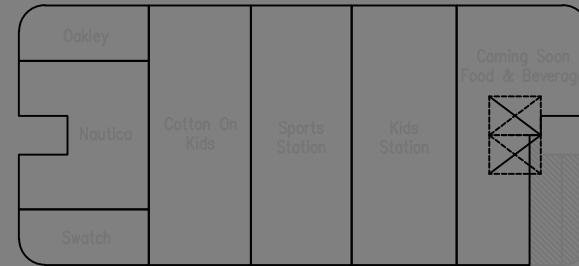
F & B @ 144.89m2 :  
 c : PT Langgeng Satya Pratama "Oldtown White Coffee"  
 d : PT Harrieko Tirta Cemerlang "Sosialita"  
 e : PT Mandai Prima "Bakso Lapangan Tembak"  
 f : PT Karya Cipta Kuala Berkah "Dimsum Babura"

F & B @ 144.89m2 :  
 a : CV Makmur Rejeki Dwikarsa "Indonesian Cuisine"  
 b : PT Laksmana Cemerlang "The Cuisine"  
 c : PT Sukses Perdana Indonesia "Pempek 68"  
 d : PT Sarana Citra Adikarya "Singgalang Jaya"

- II-6a  
PT Surya Citra Kencanaoka  
Gadgets  
"Part Shop" 118.15m2
- II-6b  
PT Putra Manunggal Ad Perkasa  
Leather / Bags  
"Camel Active" 118.15m2
- II-6c  
PT Cahaya Andhika Tamara  
Restaurant  
"Rm Cahaya Pagi" 118.15m2
- II-6d  
PT Sukses Perdana Indonesia  
"Papa Roll" 118.15m2

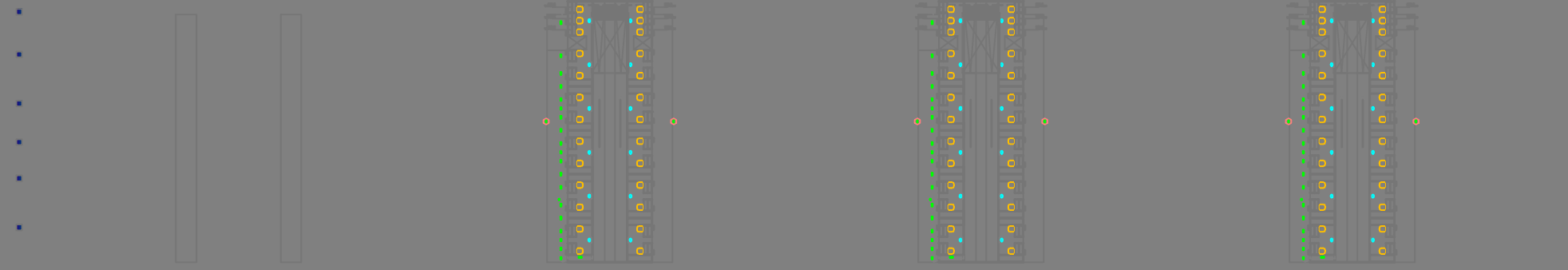


II-7 & II-8 :  
MAP



- II-9a  
PT Jasmine  
"Indomaret" 118.15m2
- II-9b  
PT Pertamina Retail  
"Bright Cafe" 118.15m2
- II-9c  
COMING SOON 118.15m2
- II-9d  
PT Aura Essence  
"Beauty Centre" (Perfumery) 118.15m2
- II-10a  
CV Makmur Rejeki Dwikarsa  
"Toko Edelin" 43.28m2  
Gift Shop
- II-10b  
CV Boentol Corner  
"Boentol Corner" 34.36m2
- II-10c  
Delranasda Deli Serdang  
Produk UKM 34.36m2

II-17



II-17

II-12  
PT Jasa Terminal Indonesia  
"Batavia Cafe" 46.00m2

II-16 : Baggage Strapping / Wrapping Service

II-17 : Baggage Strapping / Wrapping Service

II-15  
CV Sumber Artha Bhumi  
"Serambi Deli" 46.00m2